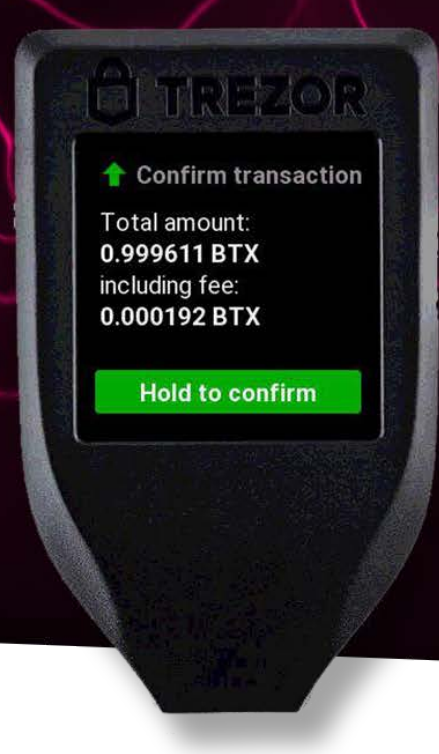
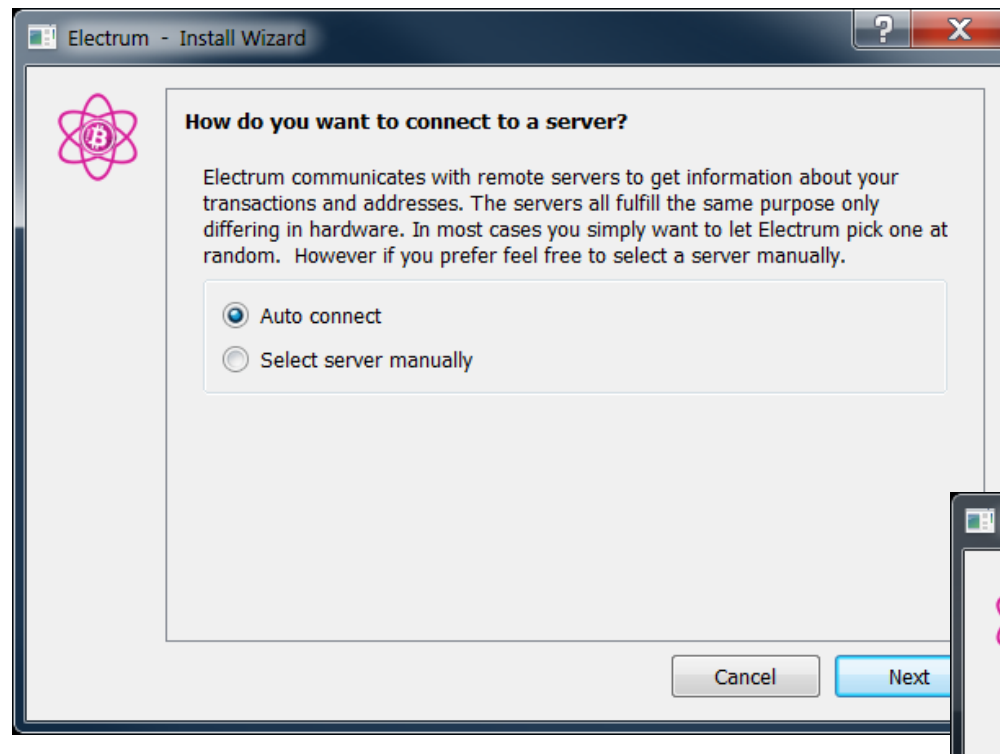




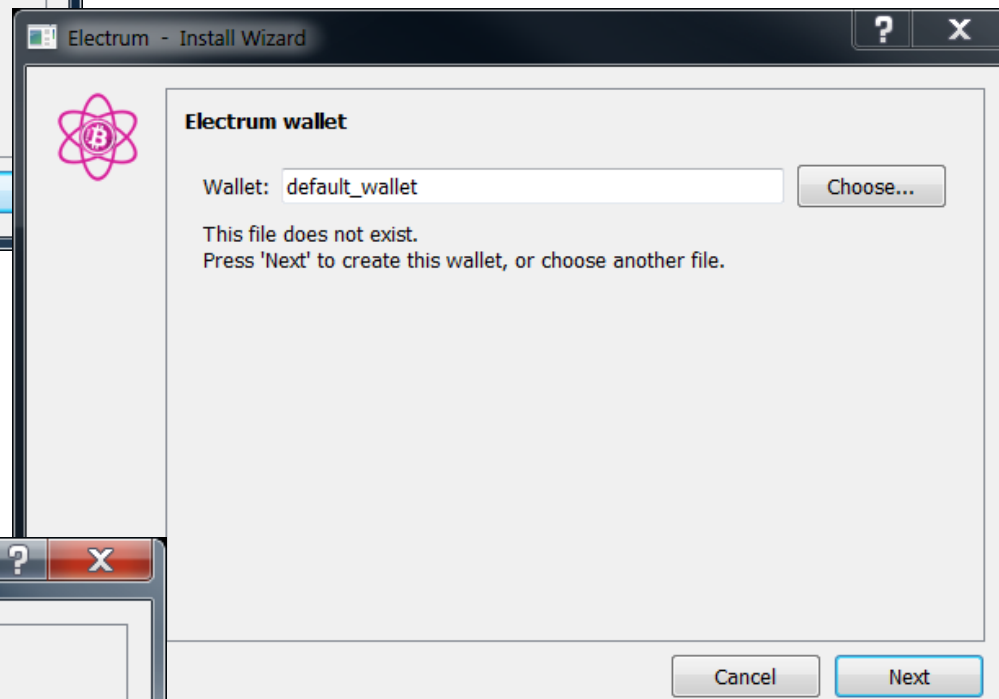
NEW VERSION!
ELECTRUM WALLET
READY TO SUPPORT
TREZOR
3.2.3-btx



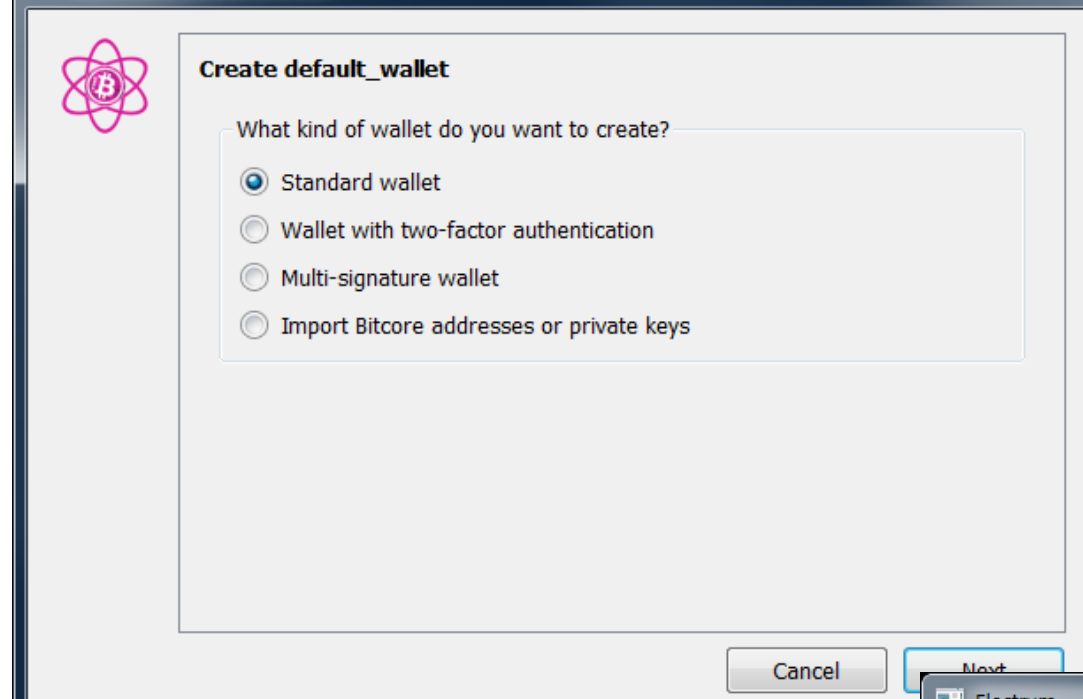
Connect Your TREZOR to Electrum TUTORIAL



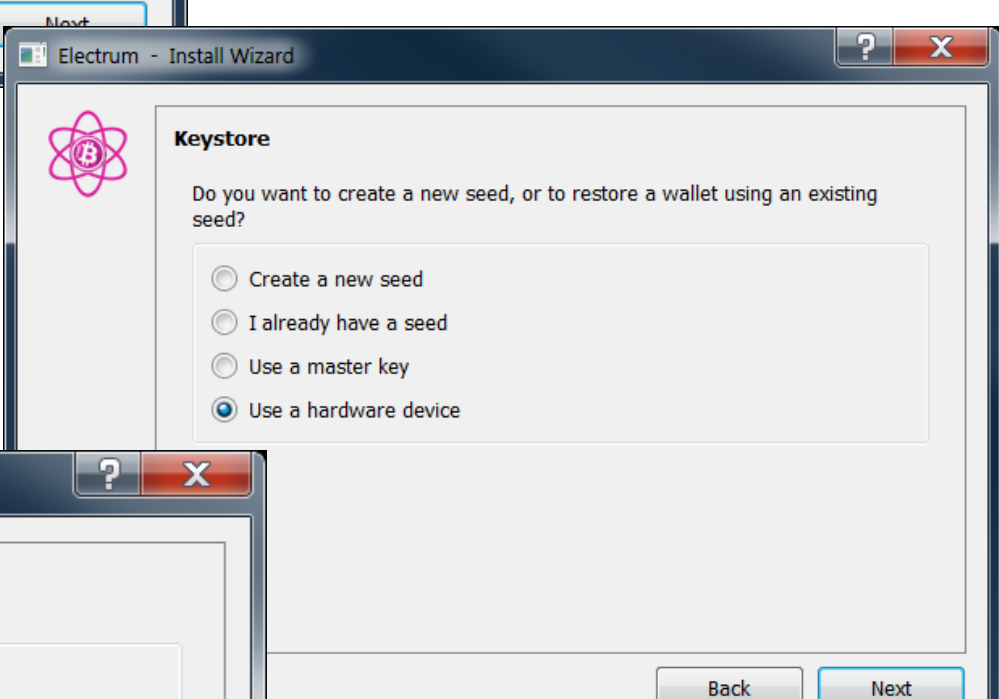
1.- Select Server



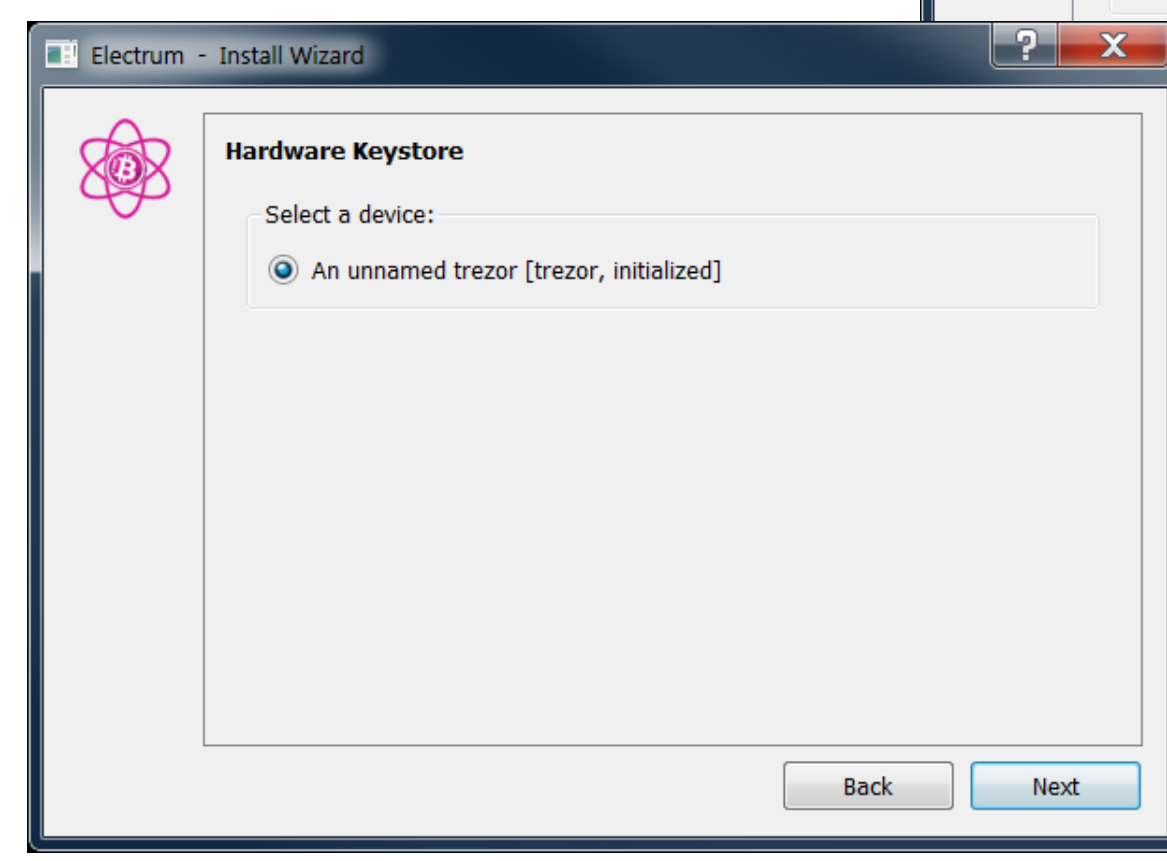
2.- Name your Wallet File



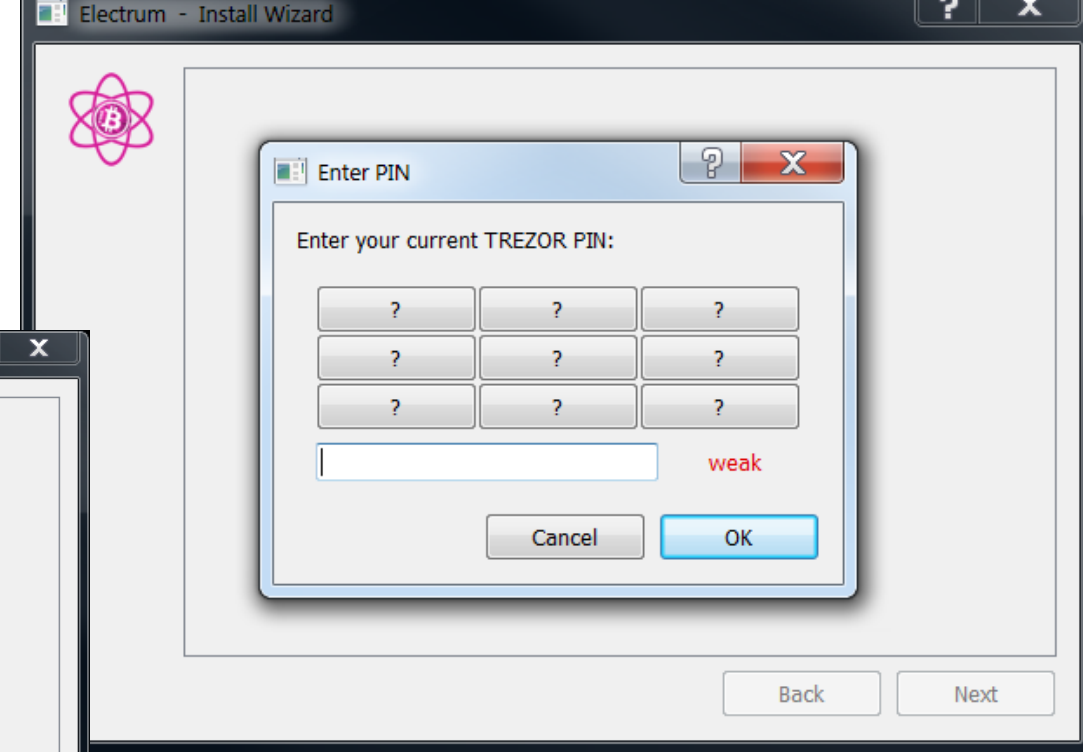
3.- Choose Standart wallet



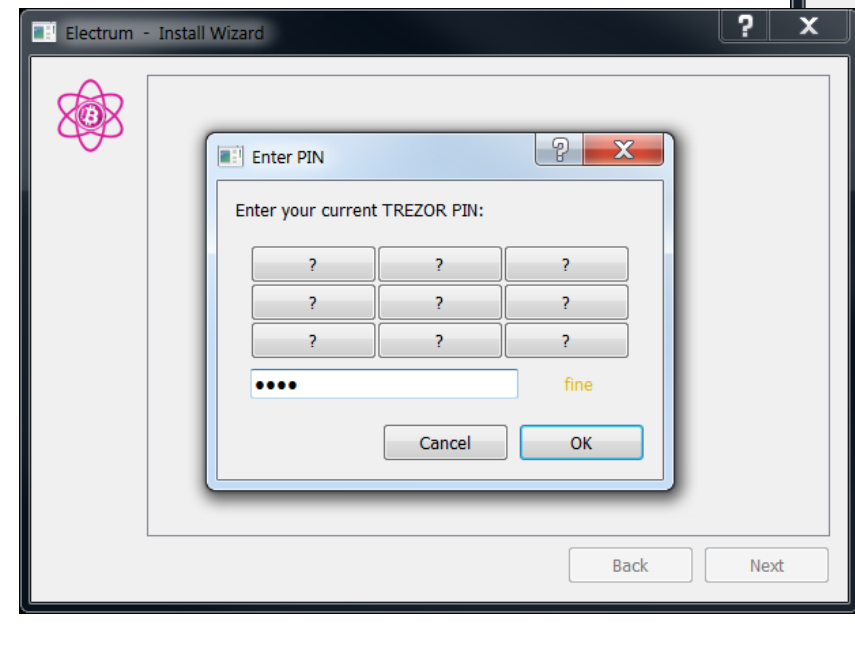
4.- Select hardware device



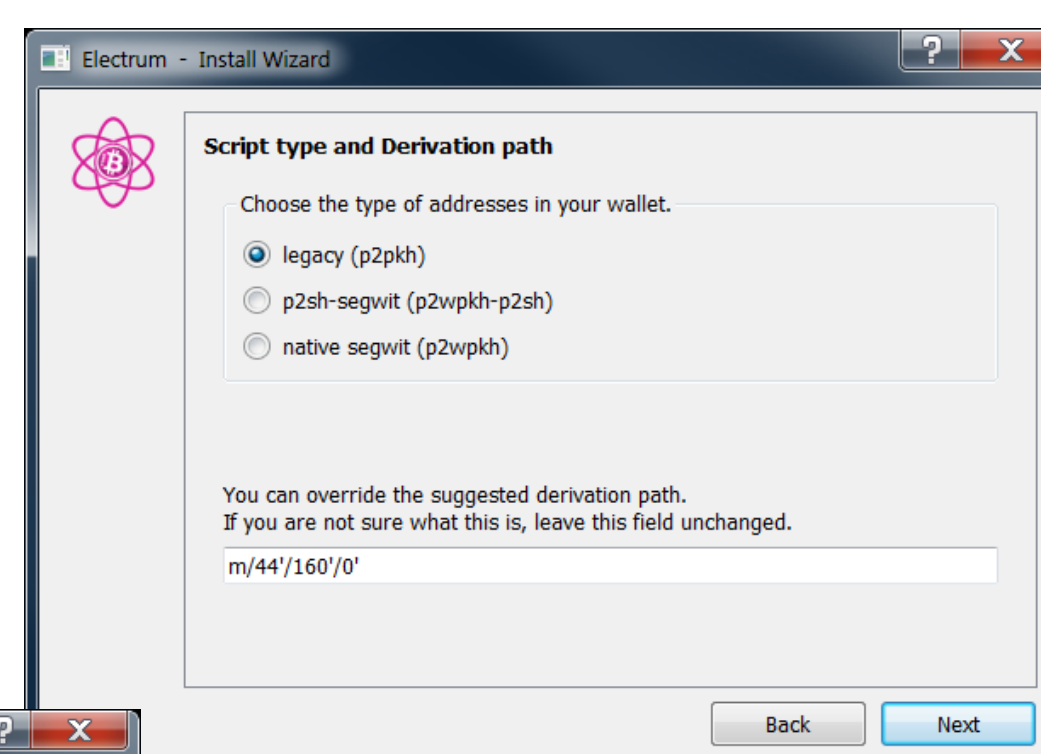
5.- Select your trezor



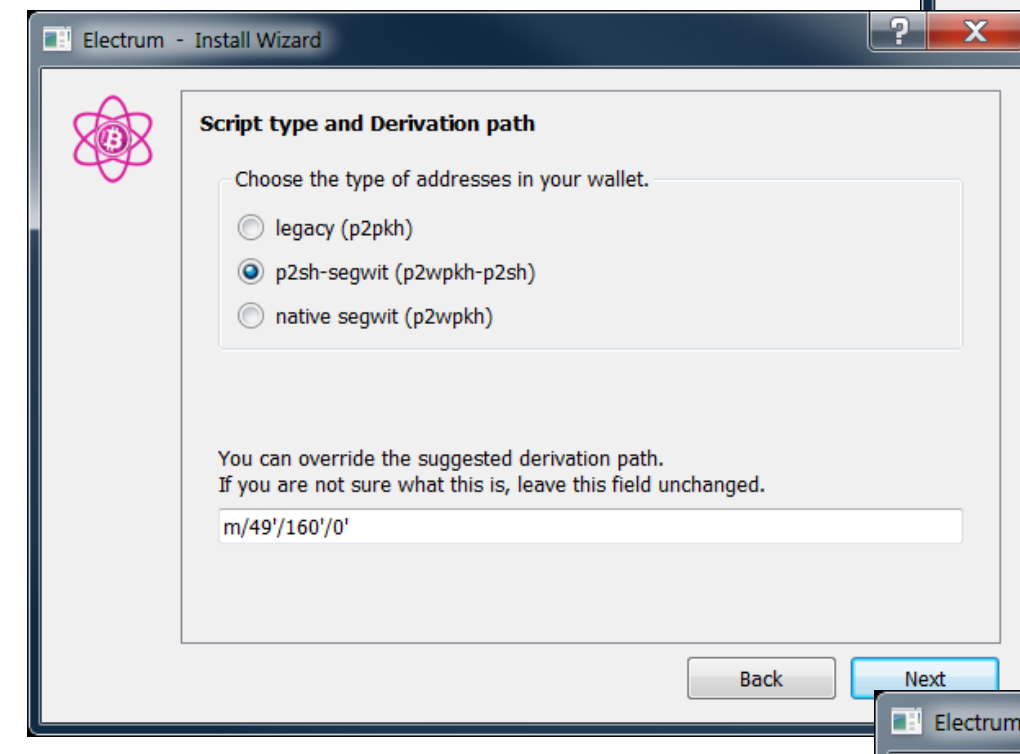
6.- Enter PIN frm your trezor



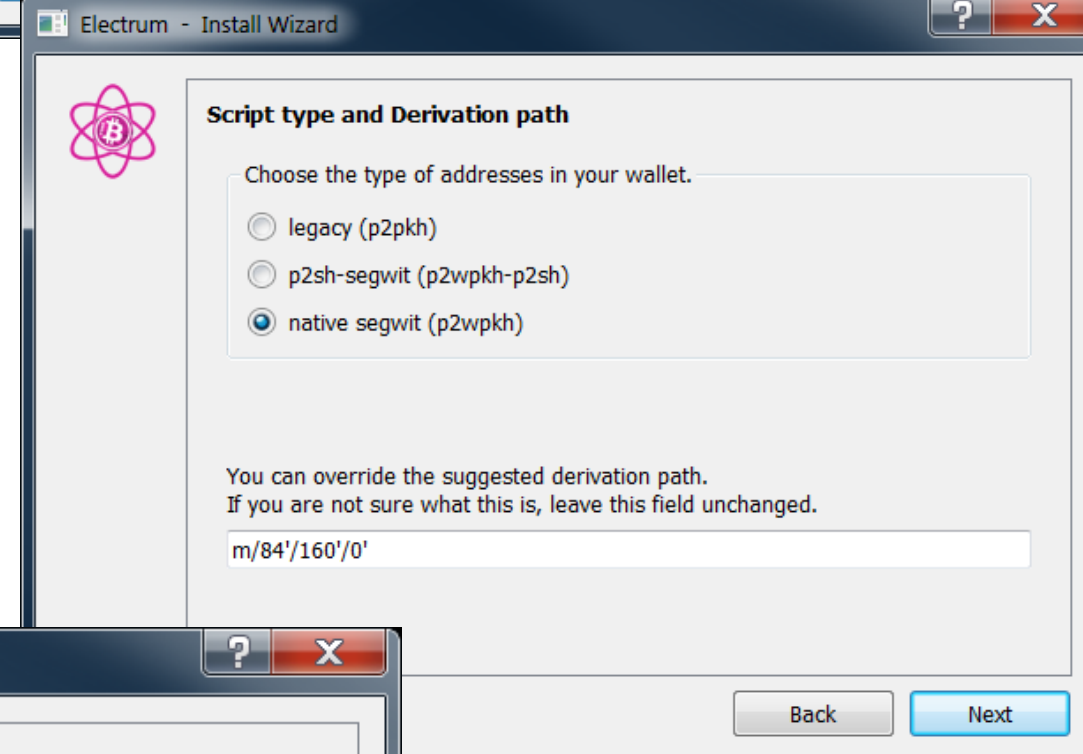
7.- Choose Wallet Format



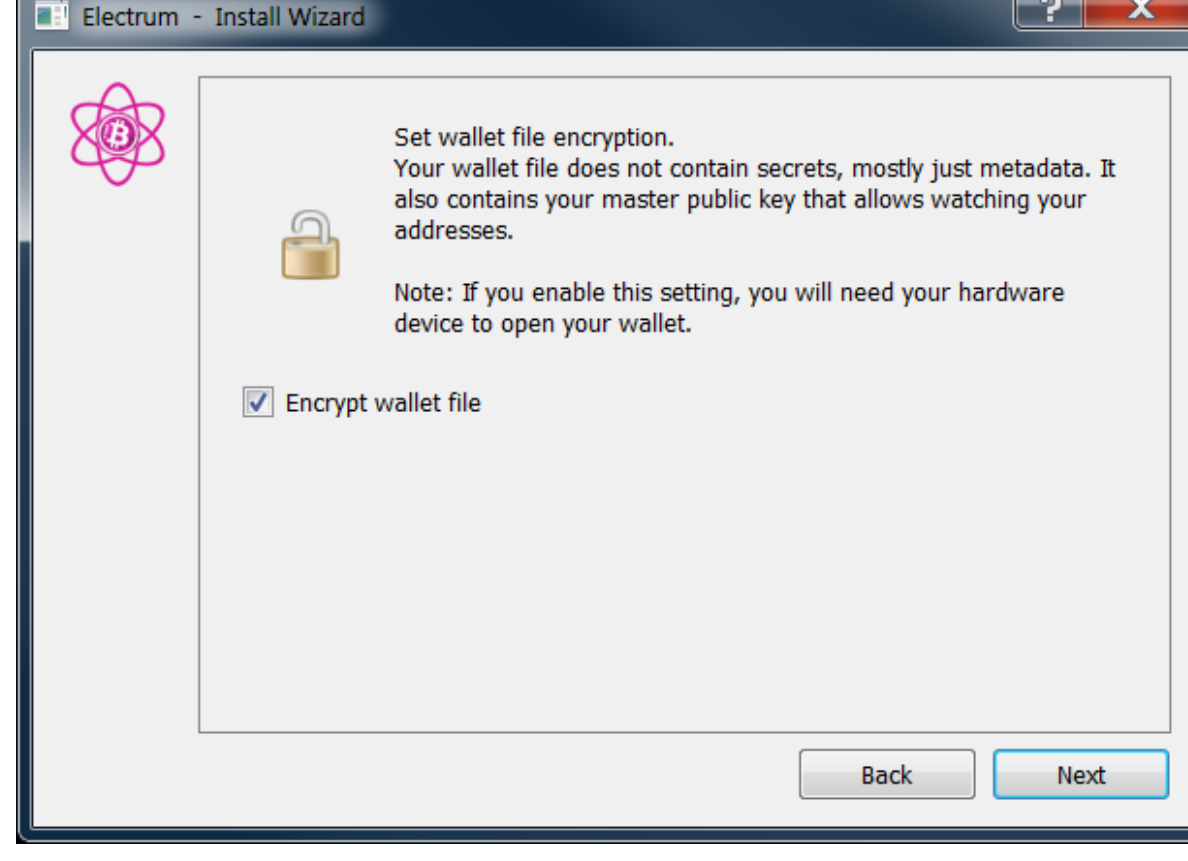
7.1.- (2xxxxx) -> m/44



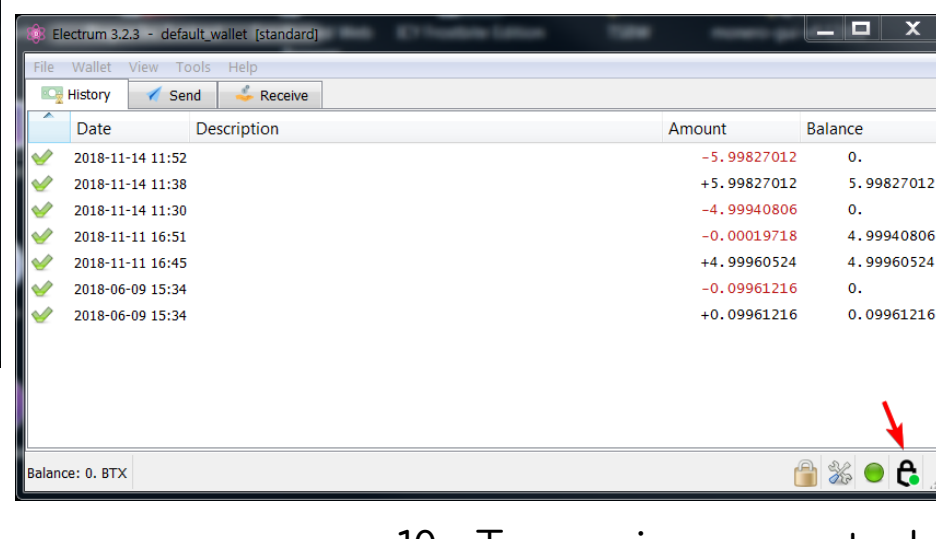
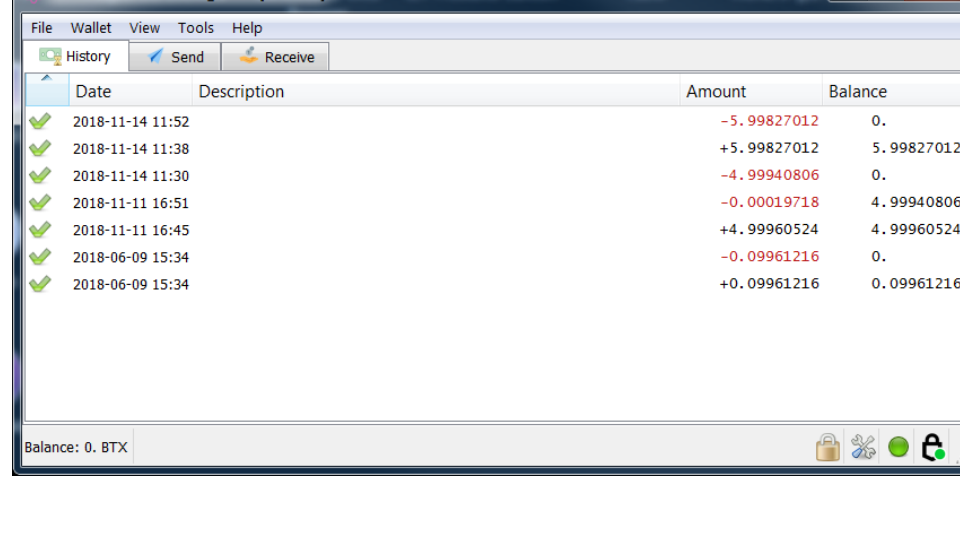
7.2.- (sxxxxx) -> m/49



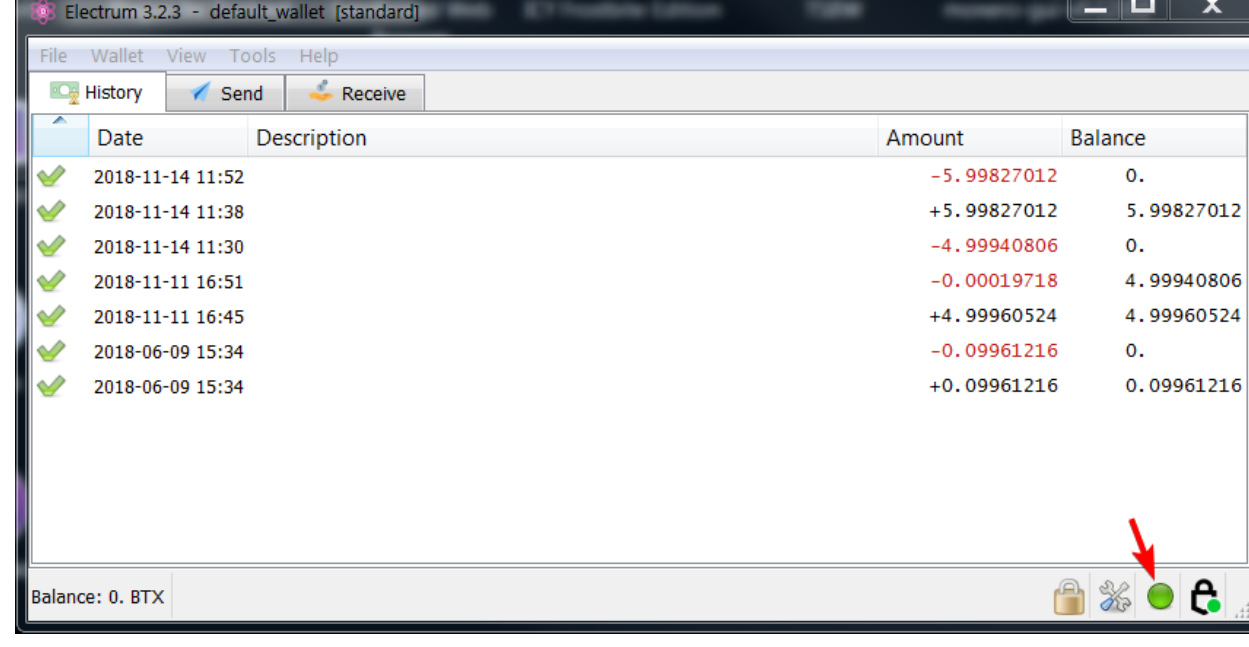
7.3.- (btxxxx) -> m/84



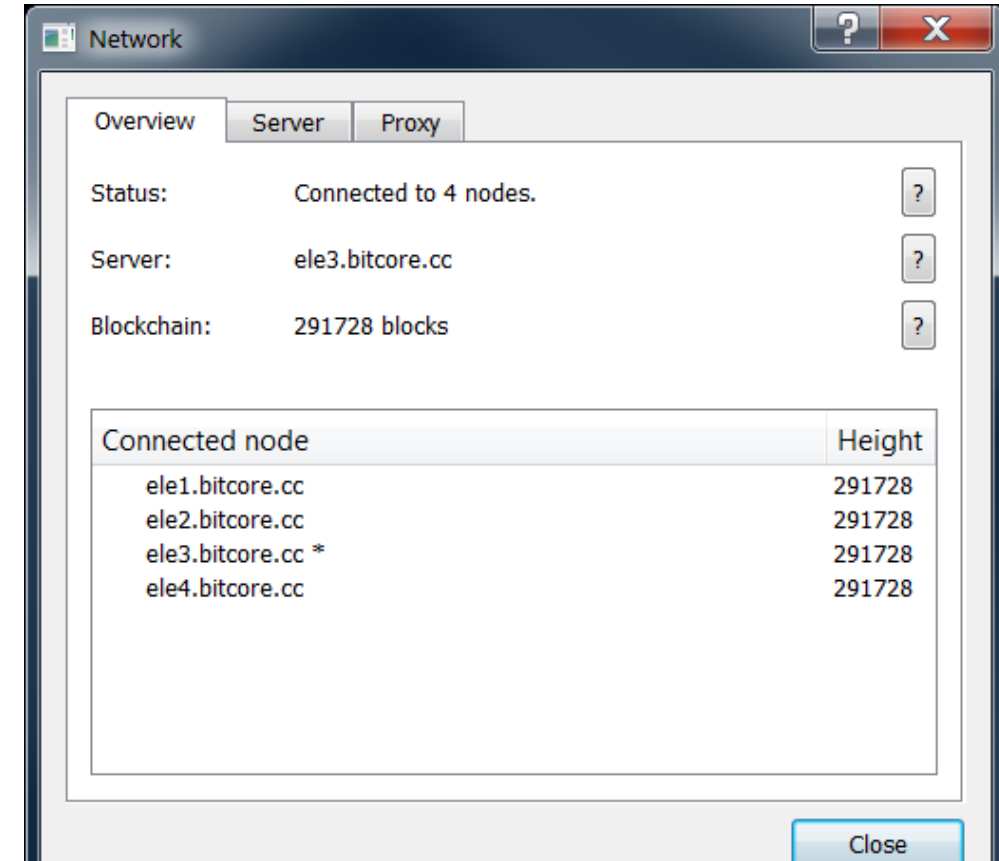
8.- Encrypt your wallet



10.- Trezor is connected



11.- Network is connected



TREZOR
The Bitcore Safe

Author: LIMXTEC Team
Team Bitcore | info@bitcore.cc